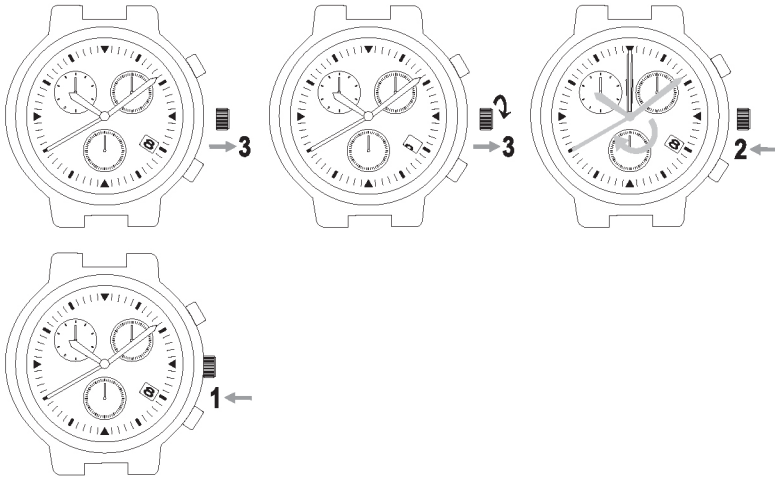


ROYAL ARMY®

Chronograph Caliber 00

I. Fitting Method of Hands

Place the module on case back shown in the figure and position the reference hand, then fit the hands according to the following procedure.



1. Pull crown gently to position 3.
2. Turn the crown to the left, and stop it just after the date changes. After the date starts changing, turn the crown slowly.
3. Push in the crown one step, taking care not to turn it.
4. Fit the reference hand, hour hand and minute hand to the 12-o'clock position.

When fitting the hands, remove the case back and place the movement on work stand.

This specifications might be changed without prior notice.